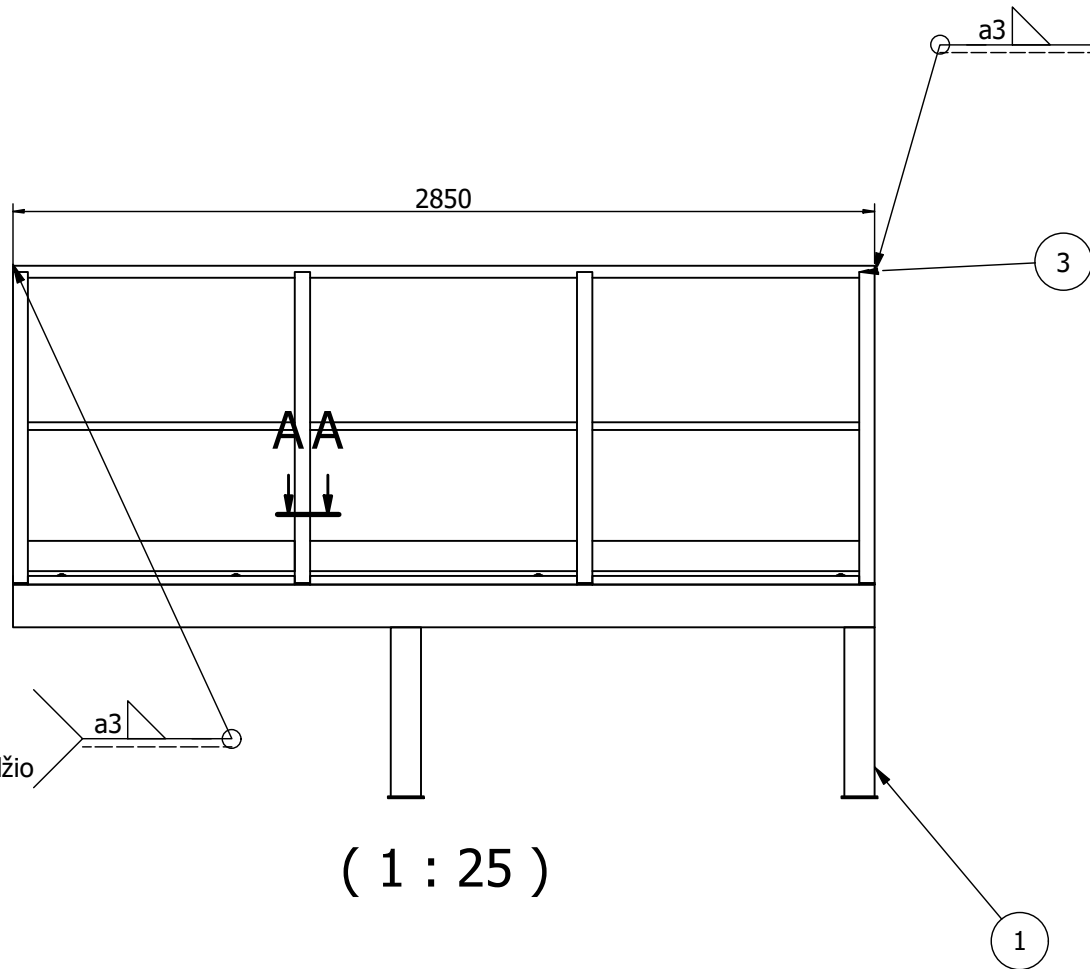


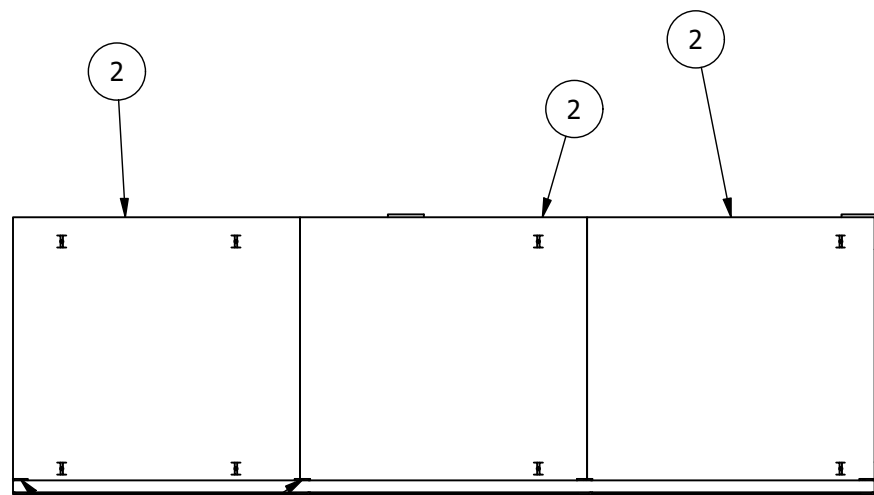
Existing law protects All in Container UAB's right of possession to this drawing. The Design or the drawing must not, without permission of the company, be published, copied or reproduced, manufactured or in any other way unauthorized exploited.

Drawing no:  
2586-02-00-00

Typ.  
Privirinta prie jau  
esamos platformos vamzdžio

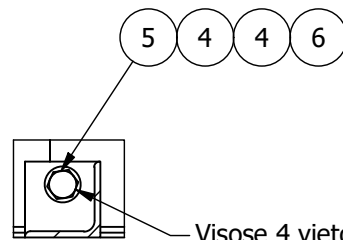


( 1 : 25 )



Skylės turėklams išpjaunamos grotelėse

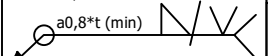

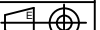
Šioje vietoje prailiginimas jungiamas  
prie jau esančios platformos su varžtais  
Skylės varžtam išpjaunamos objekte



A-A ( 1 : 5 )

Grotelės pritvirtintos su Klammerdurk

|   |   |             |                                       |       |
|---|---|-------------|---------------------------------------|-------|
| 7 | 8 | Klammerdurk | 4st Clip/m <sup>2</sup>               | 0,4   |
| 6 | 4 | Hex Nut     | ISO 4032 M12 HOT DIP GALVANIZED       | 0,1   |
| 5 | 4 | Hex Bolt    | ISO 4017 M12x35 HOT DIP GALVANIZED    | 0,2   |
| 4 | 8 | Washer      | ISO 7089 12-140 HV HOT DIP GALVANIZED | 0,1   |
| 3 | 1 | Truėklas    | 2586-02-02-00                         | 27,7  |
| 2 | 3 | Groteles    | 2586-02-00-01                         | 63,1  |
| 1 | 1 | Rėmas       | 2586-02-01-00                         | 157,6 |

|   |  |   |             |                                 |                            |  |   |                  |
|---|--|---|-------------|---------------------------------|----------------------------|--|---|------------------|
| <div>Welds, if not otherwise noted:<br/><br/>t - thinner piece thickness</div> |  | DetNo   | Oty         | Description                     | Code or Material&Dimension |  | Netweight kg                              |                  |
| Prepared<br>MatasA  |  | Date<br>2025-12-23  | Approved By |                                 | Approved Date              | Status   | General tolerances acc. to<br>ISO 2768-mK | TotWeight<br>N/A |
| Checked By  |  | Checked Date  |             | Model Name<br>2586-02-00-00.iam |                            | <div><div>"All in Container" UAB<br/>Ažtuolų g. 35,<br/>Rumšiškės,<br/>LT-56335 Kaišiadoryų r.<br/>Tel +370 687 12656</div></div> |   | Language         |
| Scale   |  | Title<br>Užlipimas  |             | Drawing No<br>2586-02-00-00     |                            |  |   | Sheet<br>1 / 1   |
| Size<br>A3  |  |   |             |                                 |                            |  |   | Rev              |
| <div>Flatpattern note<br/>EN 1090 EXC2<br/>Bend angles is the open angle.<br/>KFaktor value used = 0,44.<br/>Inside radius in bends = Thickness.</div>              |  |  |             |                                 |                            |  |   |                  |
| <div>Welding<br/>Unless other indicated qualitylevel C,<br/>according to SS-EN ISO 5817</div>   |  |   |             |                                 |                            |  |   |                  |

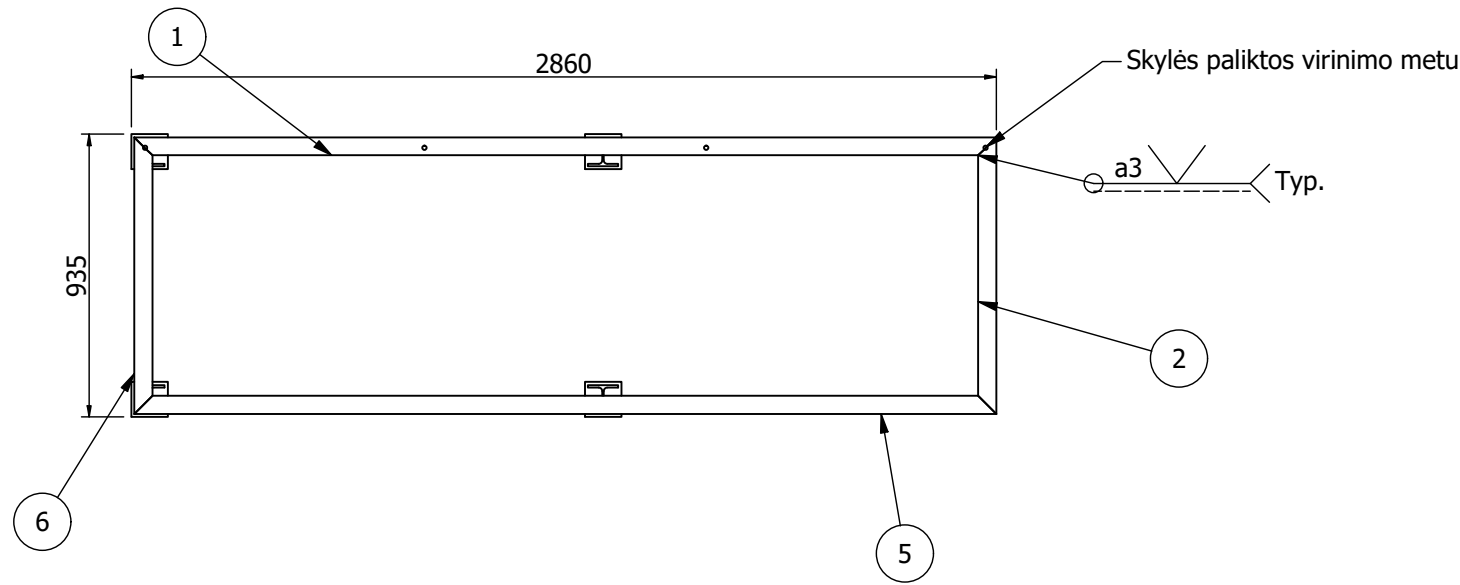
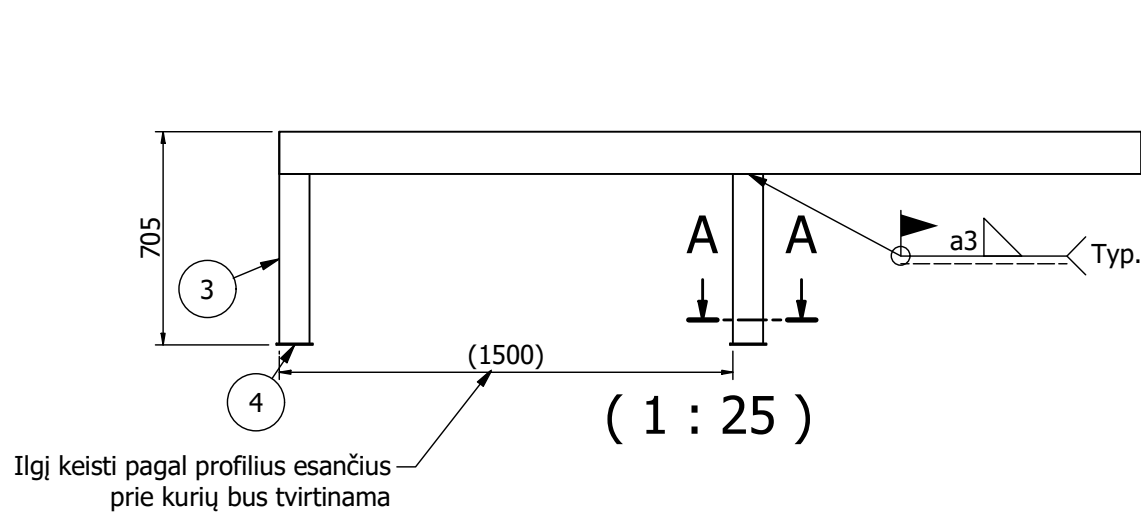



Šioje vietoje prailiginimas jungiamas  
prie laiptelių su varžtais  
Skylės varžtam išpjaunamos objekte

( 1 : 25 )

Existing law protects All in Container UAB's right of possession to this drawing. The Design or the drawing must not, without permission of the company, be published, copied or reproduced, manufactured or in any other way unauthorized exploited.

Drawing no:  
2586-02-01-00



|   |       |              |                               |                            |               |  |   |                            |               |     |
|---|-------|--------------|-------------------------------|----------------------------|---------------|--|---|----------------------------|---------------|-----|
|   |       |              |                               |                            |               |  |   |                            |               |     |
| 6   | 1     | Beam UPN     | 2586-02-01-06                 |                            |               |  |   |                            | 14,1          |     |
| 5   | 1     | Beam UPN     | 2586-02-01-05                 |                            |               |  |   |                            | 45,0          |     |
| 4   | 4     | Plate        | 2586-02-01-04                 |                            |               |  |   |                            | 2,2           |     |
| 3   | 4     | Beam HEA     | EN10025-S275JR HE-A 100 L=560 |                            |               |  |   |                            | 37,3          |     |
| 2   | 1     | Beam UPN     | 2586-02-01-02                 |                            |               |  |   |                            | 14,1          |     |
| 1   | 1     | Beam UPN     | 2586-02-01-01                 |                            |               |  |   |                            | 45,0          |     |
| DetNo   | Oty   | Description  |                               | Code or Material&Dimension |               |  |   |                            | Netweight kg  |     |
| Prepared  |       | Date         | Approved By                   |                            | Approved Date |  | Status  | General tolerances acc. to | TotWeight     |     |
| MatasA  |       | 2025-12-23   |                               |                            |               |  |   | ISO 2768-mK                | 158 kg        |     |
| Checked By  |       | Checked Date | Model Name                    |                            |               |  | <div><div><div>AHC</div><div>*All in Container* UAB<br/>Ažiuolių g. 35,<br/>Rumšiškės,<br/>LT-56335 Kaišiadorių r.<br/>Tel +370 687 12656</div></div></div> |                            | Language      |     |
|   |       |              | 2586-02-01-00.iam             |                            |               |  |   |                            | Sheet         |     |
| Scale   | Rėmas |              |                               |                            |               |  |   |                            | 1 / 1         |     |
| Size<br>A3  |       |              |                               |                            |               |  |   |                            | Drawing No    | Rev |
|  |       |              |                               |                            |               |  |   |                            | 2586-02-01-00 |     |

Welds, if not otherwise noted:  
a0,8\*(min)

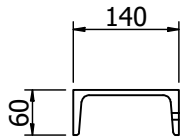
t - thinner piece thickness

**Execution class**  
EN 1090 EXC2

**Flatpattern note**  
Bend angles is the open angle.  
KFaktor value used = 0,44.  
Inside radius in bends = Thickness.

**Welding**  
Unless other indicated qualitylevel C,  
according to SS-EN ISO 5817

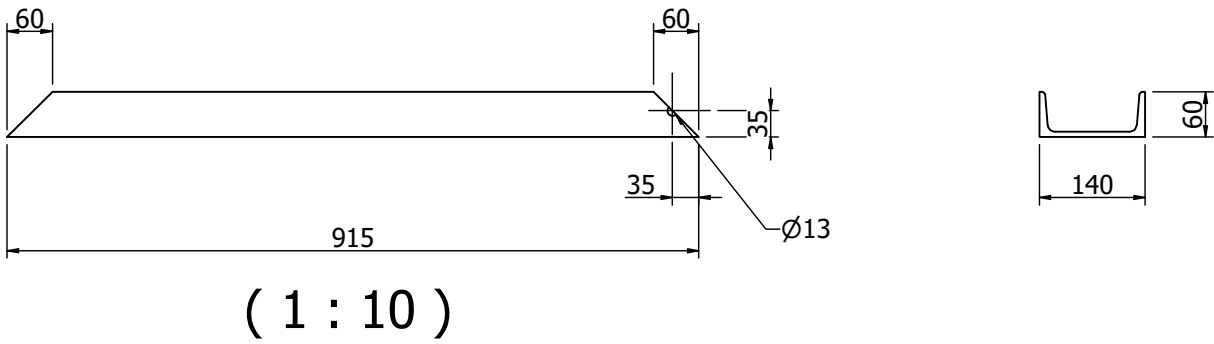
Drawing no:  
2586-02-01-01



Filename: D:\Inventor 2025\Projects\25086 Toksika\Pima aikstele\2586-02-01-01.dwg

Existing law protects All in Container UAB's right of possession to this drawing. The Design or the drawing must not, without permission of the company, be published, copied or reproduced, manufactured or in any other way unauthorized exploited.

Drawing no:  
2586-02-01-02

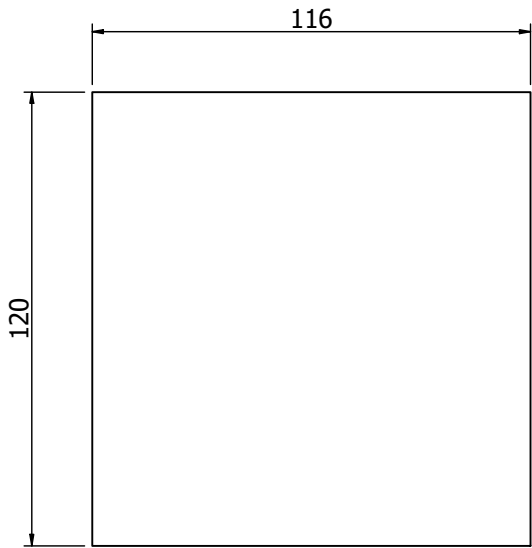


|   |              |                                   |               |   |                            |           |
|---|--------------|-----------------------------------|---------------|---|----------------------------|-----------|
| Beam UPN  |              | EN10025-S235JRG2                  |               | UPN 140 L=915   |                            | 14,1      |
| Description   |              | Material                          |               | Dimension   |                            | NetWeight |
| Prepared  | Date         | Approved By                       | Approved Date | Status  | General tolerances acc. to | TotWeight |
| MatasA  | 2025-12-23   |                                   |               |   | ISO 2768-mK                | 14 kg     |
| Checked By  | Checked Date | Model Name                        |               | <div><div>AIC</div><div><div>*All in Container* UAB</div><div>Ažiulių g. 35,</div><div>Rumšiškės,</div><div>LT-56335 Kašiadorių r.</div><div>Tel +370 687 12656</div></div></div> |                            | Language  |
| 2586-02-01-02.ipt   |              |                                   |               |   |                            | Sheet     |
| Scale   | Title        |                                   |               |   |                            | 1 / 1     |
| Size  | Beam UPN     |                                   |               |   |                            | Rev       |
| <div><div><div>Welds, if not otherwise noted:</div><div><div><div>a0,8*t (min)</div><div><div><div></div><div></div><div></div></div></div></div><div>t - thinner piece thickness</div></div></div></div> |              |                                   |               | Drawing No  |                            |           |
| <div><div>Excecution class</div><div>EN 1090 EXC2</div></div>   |              |                                   |               | 2586-02-01-02   |                            |           |
| <div><div>Flatpattern note</div><div>Bend angles is the open angle.</div><div>KFaktor value used = 0,44.</div><div>Inside radius in bends = Thickness.</div></div>  |              |                                   |               |   |                            |           |
| <div><div>Welding</div><div>Unless other indicated qualitylevel C,</div><div>according to SS-EN ISO 5817</div></div>  |              | <div><div></div><div></div></div> |               |   |                            |           |

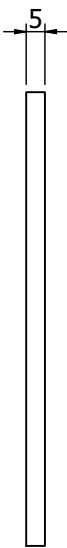


Existing law protects All in Container UAB's right of possession to this drawing. The Design or the drawing must not, without permission of the company, be published, copied or reproduced, manufactured or in any other way unauthorized exploited.

Drawing no:  
2586-02-01-04



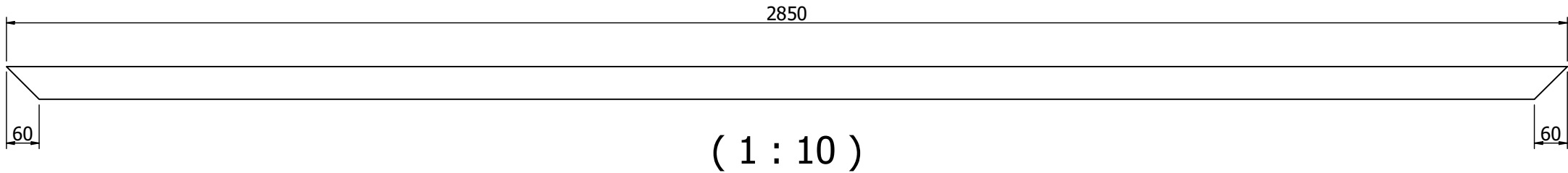
( 1 : 2 )



|             |              |                   |               |   |                            |
|-------------|--------------|-------------------|---------------|---|----------------------------|
| Plate       |              | EN10025-S235JRG2  | T=5           |   | 0,5                        |
| Description |              | Material          | Dimension     |   | NetWeight                  |
| Prepared    | Date         | Approved By       | Approved Date | Status  | General tolerances acc. to |
| MatasA      | 2025-12-23   |                   |               |   | ISO 2768-mK                |
| Checked By  | Checked Date | Model Name        |               | <div><div>*All in Container* UAB<br/>Ažuolų g. 35,<br/>Rumšiškės,<br/>LT-56335 Kašiadorijų r.<br/>Tel +370 687 12656</div></div> |                            |
|             |              | 2586-02-01-04.ipt |               |   | Language                   |
| Scale       | Title        | Plate             |               |   | Sheet                      |
| Size        |              |                   |               |   | 1 / 1                      |
|             |              |                   |               |   | Rev                        |
| Drawing No  |              |                   |               | 2586-02-01-04   |                            |

Existing law protects All in Container UAB's right of possession to this drawing. The Design or the drawing must not, without permission of the company, be published, copied or reproduced, manufactured or in any other way unauthorized exploited.

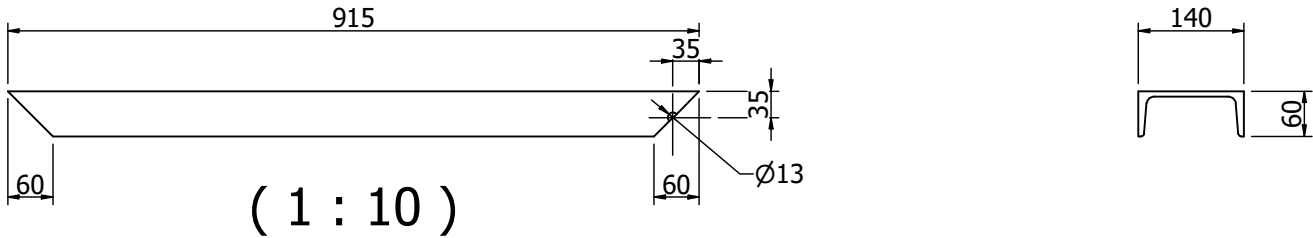
Drawing no:  
2586-02-01-05



|             |              |                   |                |  |                            |
|-------------|--------------|-------------------|----------------|--|----------------------------|
| Beam UPN    |              | EN10025-S235JRG2  | UPN 140 L=2850 |  | 45,0                       |
| Description |              | Material          | Dimension      |  | NetWeight                  |
| Prepared    | Date         | Approved By       | Approved Date  | Status   | General tolerances acc. to |
| MatasA      | 2025-12-23   |                   |                |  | ISO 2768-mK                |
| Checked By  | Checked Date | Model Name        |                | <div><div>*All in Container* UAB<br/>Ažiuolų g. 35,<br/>Rumšiškės,<br/>LT-56335 Kašiadorijų r.<br/>Tel +370 687 12656</div></div> |                            |
|             |              | 2586-02-01-05.ipt |                |  | TotWeight                  |
|             |              |                   |                |  | 45 kg                      |
|             |              |                   |                | Language   |                            |
|             |              |                   |                | Sheet  |                            |
|             |              |                   |                | 1 / 1  |                            |
|             |              |                   |                | Rev  |                            |
|             |              |                   |                |  |                            |
|             |              |                   |                | Drawing No   |                            |
|             |              |                   |                | 2586-02-01-05  |                            |

Existing law protects All in Container UAB's right of possession to this drawing. The Design or the drawing must not, without permission of the company, be published, copied or reproduced, manufactured or in any other way unauthorized exploited.

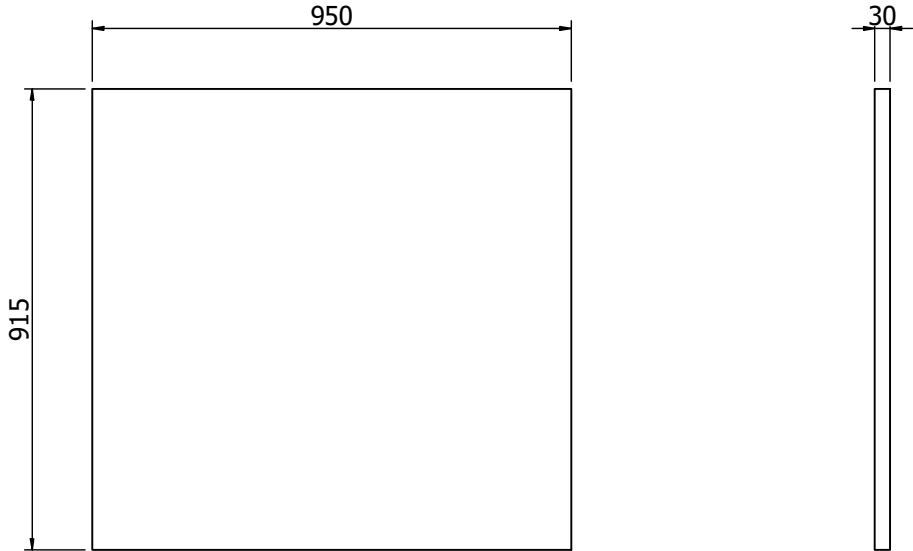
Drawing no:  
2586-02-01-06



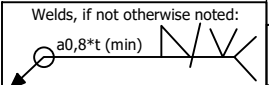


|  |                   |                   |                             |   |                            |           |
|--|-------------------|-------------------|-----------------------------|---|----------------------------|-----------|
| Beam UPN   |                   | EN10025-S235JRG2  |                             | UPN 140 L=915   |                            | 14,1      |
| Description  |                   | Material          |                             | Dimension   |                            | NetWeight |
| Prepared   | Date              | Approved By       | Approved Date               | Status  | General tolerances acc. to | TotWeight |
| MatasA   | 2025-12-23        |                   |                             |   | ISO 2768-mK                | 14 kg     |
| Checked By   | Checked Date      | Model Name        |                             | <div><div><div>AHC</div><div><div>*All in Container* UAB</div><div>Ažiulių g. 35,</div><div>Rumšiškės,</div><div>LT-56335 Kašiadorijų r.</div><div>Tel +370 687 12656</div></div></div></div> |                            | Language  |
|  |                   | 2586-02-01-06.ipt |                             |   |                            | Sheet     |
|  |                   |                   |                             |   |                            | 1 / 1     |
| Scale  | Title<br>Beam UPN |                   | Drawing No<br>2586-02-01-06 |   |                            | Rev       |
| Size   |                   |                   |                             |   |                            |           |
| A3   |                   |                   |                             |   |                            |           |
|   |                   |                   |                             |   |                            |           |
| <div>Welds, if not otherwise noted:<br/><br/>a0,8*t (min)<br/>t - thinner piece thickness</div> |                   |                   |                             |   |                            |           |
| <div>Excecution class<br/>EN 1090 EXC2</div>   |                   |                   |                             |   |                            |           |
| <div>Flatpattern note<br/>Bend angles is the open angle.<br/>KFaktor value used = 0,44.<br/>Inside radius in bends = Thickness.</div>  |                   |                   |                             |   |                            |           |
| <div>Welding<br/>Unless other indicated qualitylevel C,<br/>according to SS-EN ISO 5817</div>  |                   |                   |                             |   |                            |           |

Existing law protects All in Container UAB's right of possession to this drawing. The Design or the drawing must not, without permission of the company, be published, copied or reproduced, manufactured or in any other way unauthorized exploited.

Drawing no:  
2586-02-00-01

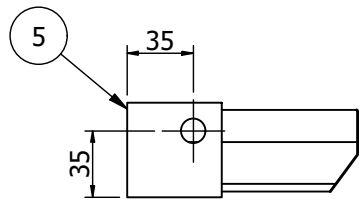
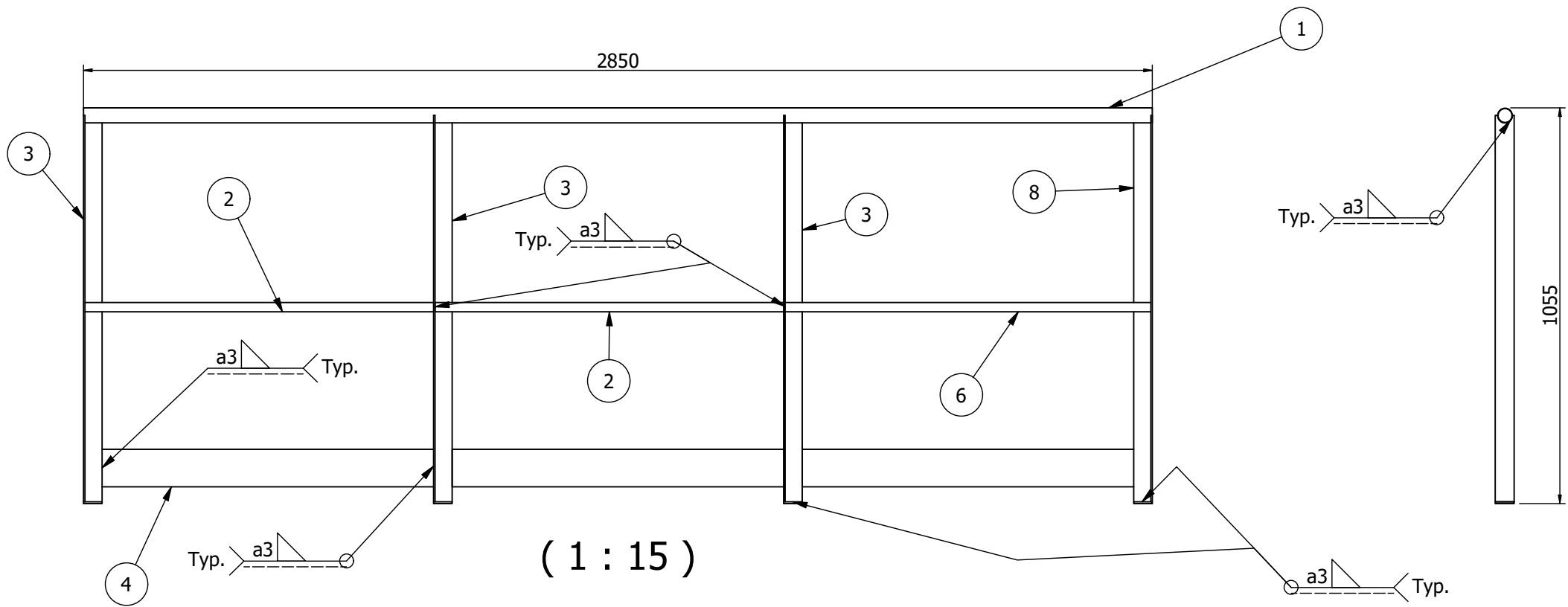
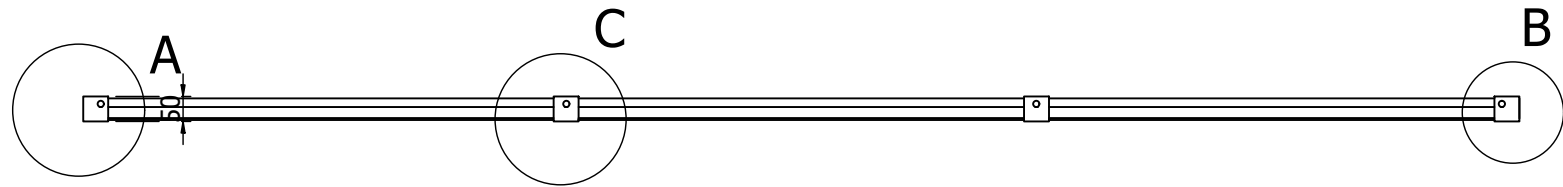


( 1 : 15 )

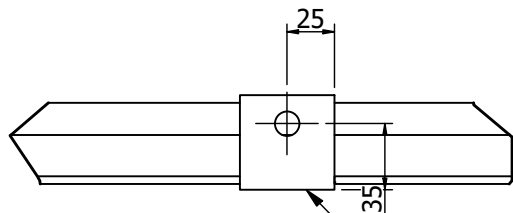
|  |  |   |                    |                                 |                             |   |   |                    |  |
|--|--|---|--------------------|---------------------------------|-----------------------------|---|---|--------------------|--|
|  |  | Groteles  |                    | Groteles 30x3                   |                             | 30x3,950x915  |   | 21,0               |  |
| <div>Welds, if not otherwise noted:<br/><br/>a0,8*t (min)<br/>t - thinner piece thickness</div> |  | Description   |                    | Material                        |                             | Dimension   |   | NetWeight          |  |
|  |  | Prepared<br>MatasA  | Date<br>2025-12-23 | Approved By                     | Approved Date               | Status  | General tolerances acc. to<br>ISO 2768-mK | TotWeight<br>21 kg |  |
| Execution class<br>EN 1090 EXC2  |  | Checked By  | Checked Date       | Model Name<br>2586-02-00-01.ipt |                             | <div><div>"All in Container" UAB<br/>Ažuolų g. 35,<br/>Rumšiškės,<br/>LT-56335 Kašiadorėjų r.<br/>Tel +370 687 12656</div></div> |   | Language           |  |
| Flatpattern note<br>Bend angles is the open angle.<br>KFaktor value used = 0,44.<br>Inside radius in bends = Thickness.  |  | Scale   | Title<br>Groteles  |                                 | Sheet<br>1 / 1              |   |   |                    |  |
| Welding<br>Unless other indicated qualitylevel C,<br>according to SS-EN ISO 5817   |  | Size<br>A3  |                    |                                 | Drawing No<br>2586-02-00-01 |   | Rev                                       |                    |  |
|  |  |  |                    |                                 |                             |   |   |                    |  |

Existing law protects All in Container UAB's right of possession to this drawing. The Design or the drawing must not, without permission of the company, be published, copied or reproduced, manufactured or in any other way unauthorized exploited.

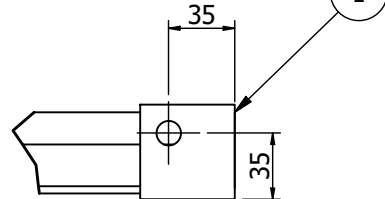
Drawing no:  
2586-02-02-00



A (1 : 4)



C (1 : 4)



B (1 : 4)

|   |  |
|---|--|
| Welds, if not otherwise noted:<br>a0,8*t (min)  |  |
| t - thinner piece thickness   |  |
| Execution class<br>EN 1090 EXC2   |  |
| Flatpattern note<br>Bend angles is the open angle.<br>KFaktor value used = 0,44.<br>Inside radius in bends = Thickness. |  |
| Welding<br>Unless other indicated quality level C,<br>according to SS-EN ISO 5817                                       |  |

|   |   |           |               |     |
|---|---|-----------|---------------|-----|
| 8 | 1 | Angle Bar | 2586-02-02-08 | 3,1 |
| 7 | 2 | Plate     | 2586-02-02-07 | 0,2 |
| 6 | 1 | Tube      | 2586-02-02-06 | 0,8 |
| 5 | 2 | Plate     | 2586-02-02-05 | 0,2 |
| 4 | 3 | Plate     | 2586-02-02-04 | 8,3 |
| 3 | 3 | Angle Bar | 2586-02-02-03 | 9,4 |
| 2 | 2 | Tube      | 2586-02-02-02 | 1,6 |
| 1 | 1 | Tube      | 2586-02-02-01 | 4,1 |

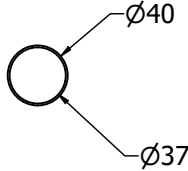
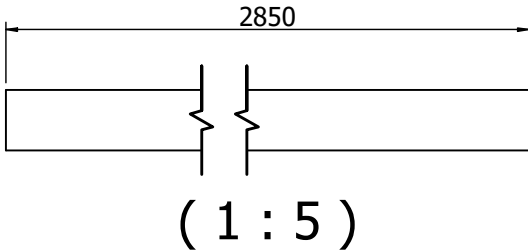
| DetNo         | Oty | Description  | Code or Material&Dimension | Netweight kg  |
|---------------|-----|--------------|----------------------------|---------------|
| Prepared      |     | Date         | Approved By                | Approved Date |
| MatasA        |     | 2025-12-23   |                            |               |
| Checked By    |     | Checked Date | Model Name                 |               |
|               |     |              | 2586-02-02-00.iam          |               |
| Scale         |     | Title        |                            |               |
| Size          |     | Truėklas     |                            |               |
|               |     |              |                            |               |
| Drawing No    |     |              |                            | Rev           |
| 2586-02-02-00 |     |              |                            |               |



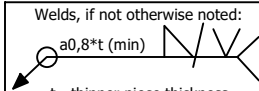
"All in Container" UAB  
Ažiuolu g. 35,  
Rumšiškių k.,  
LT-56335 Kašiadorė r.,  
Tel. +370 687 12656

Existing law protects All in Container UAB's right of possession to this drawing. The Design or the drawing must not, without permission of the company, be published, copied or reproduced, manufactured or in any other way unauthorized exploited.

Drawing no:  
2586-02-02-01



|  |              |                  |               |   |                            |           |
|--|--------------|------------------|---------------|---|----------------------------|-----------|
| Tube   |              | EN10025-S235JRG2 |               | Ø40x3 L=2850  |                            | 4,1       |
| Description  |              | Material         |               | Dimension   |                            | NetWeight |
| Prepared   | Date         | Approved By      | Approved Date | Status  | General tolerances acc. to | TotWeight |
| MatasA   | 2025-12-23   |                  |               |   | ISO 2768-mK                | 4 kg      |
| Checked By   | Checked Date | Model Name       |               | <div><div><div>AIC</div><div><div>*All in Container* UAB</div><div>Ažiulių g. 35,</div><div>Rumšiškės,</div><div>LT-56335 Kašiadorijų r.</div><div>Tel +370 687 12656</div></div></div></div> |                            | Language  |
| 2586-02-02-01.ipt  |              |                  |               |   |                            | Sheet     |
|  |              |                  |               |   |                            | 1 / 1     |
| Scale  |              | Tube             |               | Drawing No  |                            | Rev       |
| Size   |              |                  |               | 2586-02-02-01   |                            |           |
| A3   |              |                  |               |   |                            |           |
| Welding  |              |                  |               |   |                            |           |
| Unless other indicated qualitylevel C, according to SS-EN ISO 5817 |              |                  |               |   |                            |           |



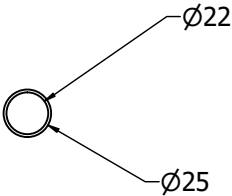
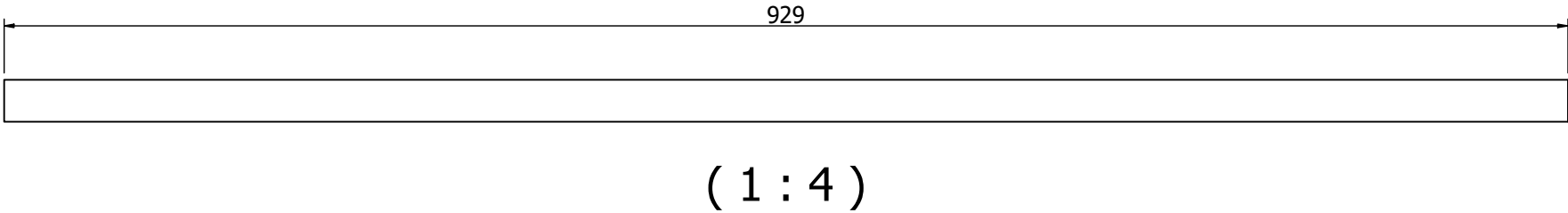
Excecution class  
EN 1090 EXC2

Flatpattern note  
Bend angles is the open angle.  
KFaktor value used = 0,44.  
Inside radius in bends = Thickness.

Welding  
Unless other indicated qualitylevel C, according to SS-EN ISO 5817

Existing law protects All in Container UAB's right of possession to this drawing. The Design or the drawing must not, without permission of the company, be published, copied or reproduced, manufactured or in any other way unauthorized exploited.

Drawing no:  
2586-02-02-02



|   |              |                   |               |   |                            |           |
|---|--------------|-------------------|---------------|---|----------------------------|-----------|
| Tube  |              | EN10025-S235JRG2  |               | Ø25x3 L=929,3   |                            | 0,8       |
| Description   |              | Material          |               | Dimension   |                            | NetWeight |
| Prepared  | Date         | Approved By       | Approved Date | Status  | General tolerances acc. to | TotWeight |
| MatasA  | 2025-12-23   |                   |               |   | ISO 2768-mK                | 1 kg      |
| Checked By  | Checked Date | Model Name        |               | <div><div><div>AIC</div><div><div>*All in Container* UAB</div><div>Ažiulių g. 35,</div><div>Rumšiškės,</div><div>LT-56335 Kašiadoryių r.</div><div>Tel +370 687 12656</div></div></div></div> |                            | Language  |
|   |              | 2586-02-02-02.ipt |               |   |                            | Sheet     |
| Scale   |              | Title             |               | Drawing No  |                            | 1 / 1     |
| Size  |              |                   |               |   |                            |           |
| A3  |              |                   |               | 2586-02-02-02   |                            | Rev       |
| Welding   |              |                   |               |   |                            |           |
| Unless other indicated quality level C, according to SS-EN ISO 5817 |              |                   |               |   |                            |           |

Welds, if not otherwise noted:

Ø

a0,8\*t (min)

t - thinner piece thickness

Excecution class

EN 1090 EXC2

Flatpattern note

Bend angles is the open angle.

KFaktor value used = 0,44.

Inside radius in bends = Thickness.

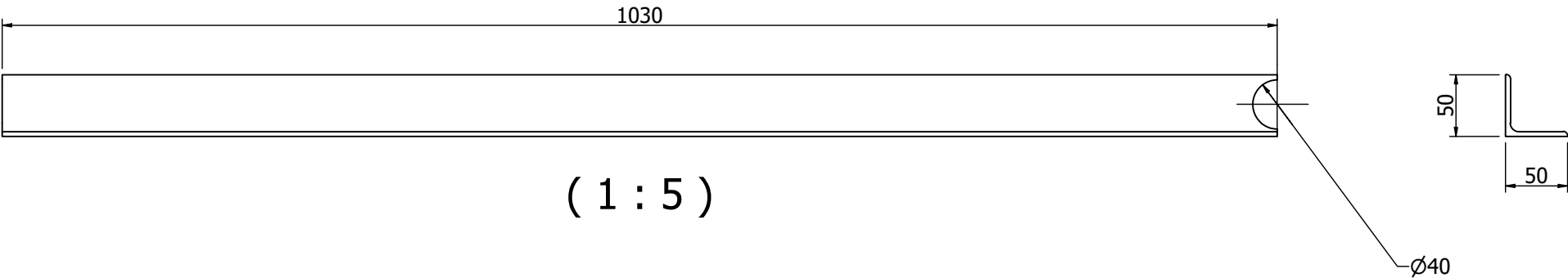
Welding

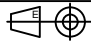
Unless other indicated qualitylevel C, according to SS-EN ISO 5817




Existing law protects All in Container UAB's right of possession to this drawing. The Design or the drawing must not, without permission of the company, be published, copied or reproduced, manufactured or in any other way unauthorized exploited.

Drawing no:  
2586-02-02-03



|   |              |                  |               |   |                            |           |
|---|--------------|------------------|---------------|---|----------------------------|-----------|
| Angle Bar   |              | EN10025-S235JRG2 |               | 50x50x4 L=1030  |                            | 3,1       |
| Description   |              | Material         |               | Dimension   |                            | NetWeight |
| Prepared  | Date         | Approved By      | Approved Date | Status  | General tolerances acc. to | TotWeight |
| MatasA  | 2025-12-23   |                  |               |   | ISO 2768-mK                | 3 kg      |
| Checked By  | Checked Date | Model Name       |               | <div><div><div>AHC</div><div><div>"All in Container" UAB</div><div>Ažuolių g. 35,</div><div>Rumšiškės,</div><div>LT-56335 Kašiadorijų r.</div><div>Tel +370 687 12656</div></div></div></div> |                            | Language  |
| 2586-02-02-03.ipt   |              |                  |               |   |                            | Sheet     |
| Scale   | Title        | Angle Bar        |               |   |                            | 1 / 1     |
| Size  |              |                  |               |   |                            | Rev       |
| A3  |              |                  |               |   |                            |           |
|  |              |                  |               |   |                            |           |
| Welding   |              | Drawing No       |               | 2586-02-02-03   |                            |           |
| Unless other indicated qualitylevel C, according to SS-EN ISO 5817                    |              |                  |               |   |                            |           |

Welds, if not otherwise noted:  
a0,8\*t (min) 

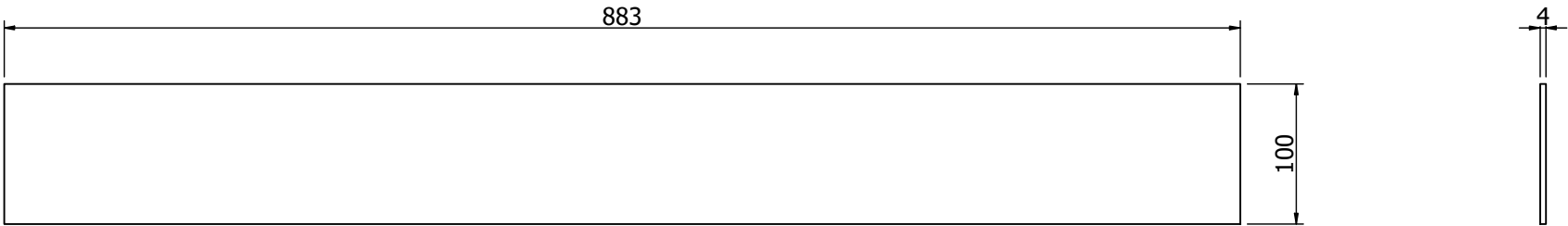
t - thinner piece thickness  
Exceution class  
EN 1090 EXC2

Flatpattern note  
Bend angles is the open angle.  
KFaktor value used = 0,44.  
Inside radius in bends = Thickness.

Welding  
Unless other indicated qualitylevel C, according to SS-EN ISO 5817

Existing law protects All in Container UAB's right of possession to this drawing. The Design or the drawing must not, without permission of the company, be published, copied or reproduced, manufactured or in any other way unauthorized exploited.

Drawing no:  
2586-02-02-04

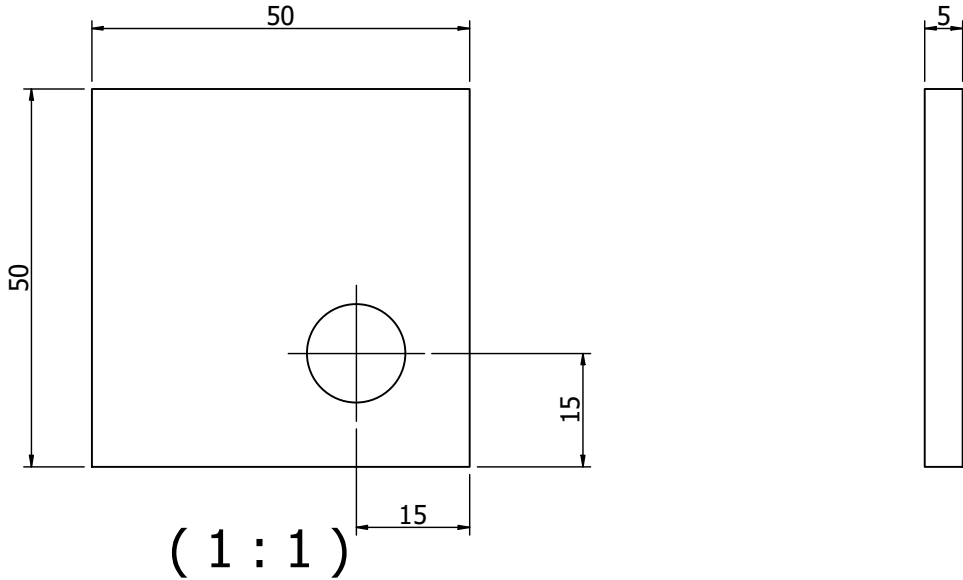


( 1 : 5 )

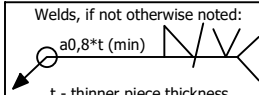
|  |                    |                  |               |   |   |                             |     |
|--|--------------------|------------------|---------------|---|---|-----------------------------|-----|
| Plate  |                    | EN10025-S235JRG2 |               | T=4   |   | 2,8                         |     |
| Description  |                    | Material         |               | Dimension   |   | NetWeight                   |     |
| Prepared<br>MatasA   | Date<br>2025-12-23 | Approved By      | Approved Date | Status  | General tolerances acc. to<br>ISO 2768-mK | TotWeight<br>3 kg           |     |
| Checked By   |                    | Checked Date     |               | Model Name<br>2586-02-02-04.ipt   |   | Language                    |     |
| Scale  |                    | Title<br>Plate   |               | <div><div><div>"All in Container" UAB</div><div>Ažuolų g. 35,</div><div>Rumšiškės,</div><div>LT-56335 Kašiadorių r.</div><div>Tel +370 687 12656</div></div></div> |   | Sheet<br>1 / 1              |     |
| Size<br>A3   |                    |                  |               |   |   | Drawing No<br>2586-02-02-04 | Rev |
|   |                    |                  |               |   |   |                             |     |
| <div>Welds, if not otherwise noted:<br/><br/>a0,8*t (min)<br/>t - thinner piece thickness</div> <div>Execution class<br/>EN 1090 EXC2</div> <div>Flatpattern note<br/>Bend angles is the open angle.<br/>KFaktor value used = 0,44.<br/>Inside radius in bends = Thickness.</div> <div>Welding<br/>Unless other indicated qualitylevel C,<br/>according to SS-EN ISO 5817</div> |                    |                  |               |   |   |                             |     |

Existing law protects All in Container UAB's right of possession to this drawing. The Design or the drawing must not, without permission of the company, be published, copied or reproduced, manufactured or in any other way unauthorized exploited.

Drawing no:  
2586-02-02-05



|   |              |                  |               |  |                            |
|---|--------------|------------------|---------------|--|----------------------------|
| Plate   |              | EN10025-S235JRG2 | T=5           |  | 0,1                        |
| Description   |              | Material         | Dimension     |  | NetWeight                  |
| Prepared  | Date         | Approved By      | Approved Date | Status   | General tolerances acc. to |
| MatasA  | 2025-12-23   |                  |               |  | ISO 2768-mK                |
| Checked By  | Checked Date | Model Name       |               | <div><div>AIC</div><div><div>*All in Container* UAB</div><div>Ažuolu g. 35,</div><div>Rumšiškių k.,</div><div>LT-56335 Kašiadorė r.</div><div>Tel +370 687 12656</div></div></div> |                            |
| 2586-02-02-05.ipt   |              |                  |               |  | Language                   |
| Scale   | Title        | Plate            |               | Drawing No   |                            |
| Size  |              |                  |               |  |                            |
| A3  |              |                  |               | 2586-02-02-05  |                            |
| Welding   |              |                  |               | Rev  |                            |
| Unless other indicated quality level C, according to SS-EN ISO 5817 |              |                  |               |  |                            |



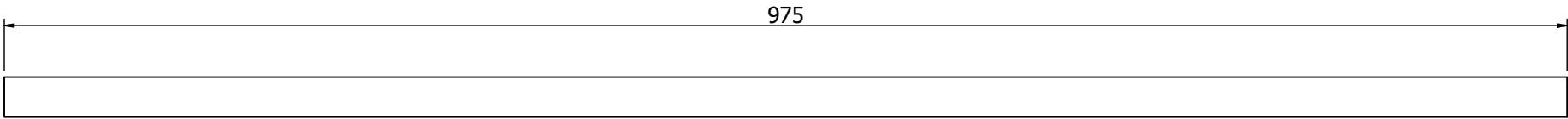
Excecution class  
EN 1090 EXC2

Flatpattern note  
Bend angles is the open angle.  
KFaktor value used = 0,44.  
Inside radius in bends = Thickness.

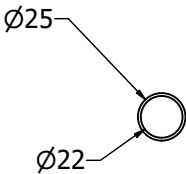
Welding  
Unless other indicated quality level C, according to SS-EN ISO 5817

Existing law protects All in Container UAB's right of possession to this drawing. The Design or the drawing must not, without permission of the company, be published, copied or reproduced, manufactured or in any other way unauthorized exploited.

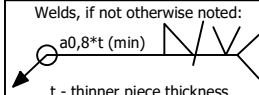
Drawing no:  
2586-02-02-06



( 1 : 4 )



|  |              |                  |               |   |                            |           |
|--|--------------|------------------|---------------|---|----------------------------|-----------|
| Tube   |              | EN10025-S235JRG2 |               | Ø25x3 L=975,3   |                            | 0,8       |
| Description  |              | Material         |               | Dimension   |                            | NetWeight |
| Prepared   | Date         | Approved By      | Approved Date | Status  | General tolerances acc. to | TotWeight |
| MatasA   | 2025-12-23   |                  |               |   | ISO 2768-mK                | 1 kg      |
| Checked By   | Checked Date | Model Name       |               | <div><div><div>AIC</div><div>*All in Container* UAB<br/>Ažuolų g. 35,<br/>Rumšiškės,<br/>LT-56335 Kašiadorijų r.<br/>Tel +370 687 12656</div></div></div> |                            | Language  |
| 2586-02-02-06.ipt  |              |                  |               |   |                            | Sheet     |
|  |              |                  |               |   |                            | 1 / 1     |
| Scale  |              | Tube             |               | Drawing No  |                            | Rev       |
| Size   |              |                  |               | 2586-02-02-06   |                            |           |
| A3   |              |                  |               |   |                            |           |
| Welding  |              |                  |               |   |                            |           |
| Unless other indicated qualitylevel C, according to SS-EN ISO 5817 |              |                  |               |   |                            |           |



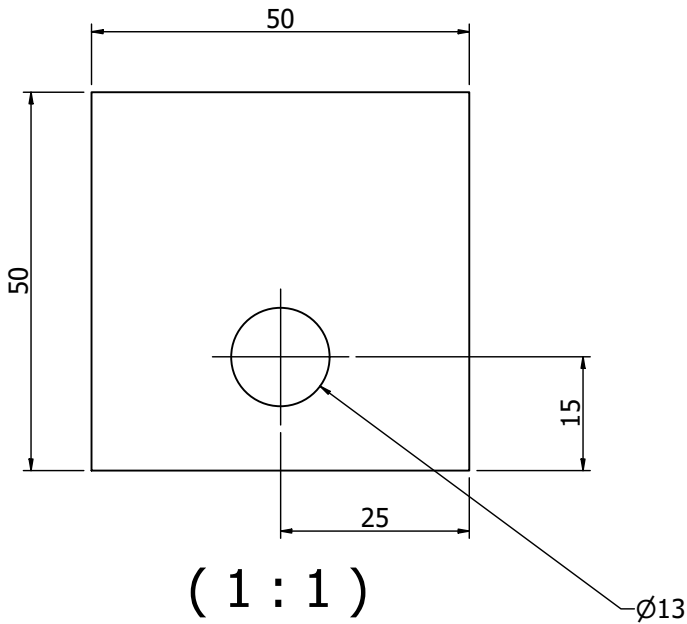
t - thinner piece thickness  
Exceution class  
EN 1090 EXC2

Flatpattern note  
Bend angles is the open angle.  
KFaktor value used = 0,44.  
Inside radius in bends = Thickness.

Welding  
Unless other indicated qualitylevel C,  
according to SS-EN ISO 5817

Existing law protects All in Container UAB's right of possession to this drawing. The Design or the drawing must not, without permission of the company, be published, copied or reproduced, manufactured or in any other way unauthorized exploited.

Drawing no:  
2586-02-02-07



|   |              |                   |               |   |                            |           |
|---|--------------|-------------------|---------------|---|----------------------------|-----------|
| Plate   |              | EN10025-S235JRG2  |               | T=5   |                            | 0,1       |
| Description   |              | Material          |               | Dimension   |                            | NetWeight |
| Prepared  | Date         | Approved By       | Approved Date | Status  | General tolerances acc. to | TotWeight |
| MatasA  | 2025-12-23   |                   |               |   | ISO 2768-mK                | 0 kg      |
| Checked By  | Checked Date | Model Name        |               | <div><div><div>AIC</div><div>*All in Container* UAB<br/>Ažuolių g. 35,<br/>Rumšiškės,<br/>LT-56335 Kašiadorių r.<br/>Tel +370 687 12656</div></div></div> |                            | Language  |
|   |              | 2586-02-02-07.ipt |               |   |                            | Sheet     |
| Scale   |              | Plate             |               | Drawing No<br>2586-02-02-07   |                            | 1 / 1     |
| Size  |              |                   |               |   |                            |           |
| A3  |              |                   |               |   |                            |           |
|  |              |                   |               |   |                            | Rev       |

Welds, if not otherwise noted:



a0,8\* (min)

t - thinner piece thickness

Execution class  
EN 1090 EXC2

Flat pattern note  
Bend angles is the open angle.  
KFaktor value used = 0,44.  
Inside radius in bends = Thickness.

Welding  
Unless other indicated quality level C,  
according to SS-EN ISO 5817

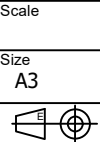
Welds, if not otherwise noted:  
a0,8\*t (min)

t - thinner piece thickness

Excecution class  
EN 1090 EXC2

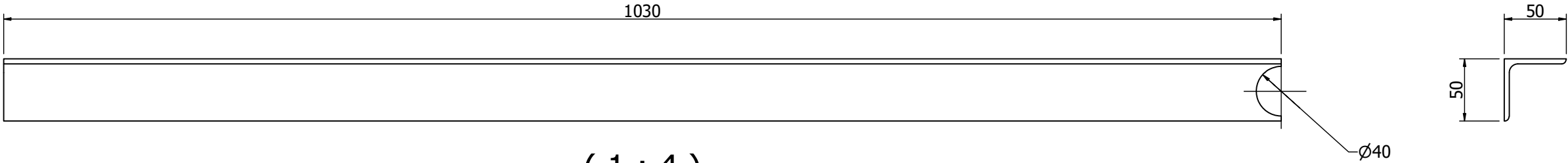
Flatpattern note  
Bend angles is the open angle.  
KFaktor value used = 0,44.  
Inside radius in bends = Thickness.

Welding  
Unless other indicated qualitylevel C,  
according to SS-EN ISO 5817



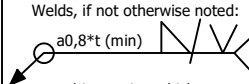
Existing law protects All in Container UAB's right of possession to this drawing. The Design or the drawing must not, without permission of the company, be published, copied or reproduced, manufactured or in any other way unauthorized exploited.

Drawing no:  
2586-02-02-08



|   |              |                  |               |   |                            |           |
|---|--------------|------------------|---------------|---|----------------------------|-----------|
| Angle Bar   |              | EN10025-S235JRG2 |               | 50x50x4 L=1030  |                            | 3,1       |
| Description   |              | Material         |               | Dimension   |                            | NetWeight |
| Prepared  | Date         | Approved By      | Approved Date | Status  | General tolerances acc. to | TotWeight |
| MatasA  | 2025-12-23   |                  |               |   | ISO 2768-mK                | 3 kg      |
| Checked By  | Checked Date | Model Name       |               | <div><div><div>AIC</div><div><div>"All in Container" UAB</div><div>Ažiulių g. 35,</div><div>Rumšiškės,</div><div>LT-56335 Kašiadorijų r.</div><div>Tel +370 687 12656</div></div></div></div> |                            | Language  |
| 2586-02-02-08.ipt   |              |                  |               |   |                            | Sheet     |
| Scale   | Title        | Angle Bar        |               |   |                            | 1 / 1     |
| Size  |              |                  |               |   |                            | Rev       |
| A3  |              |                  |               |   |                            |           |
|  |              |                  |               |   |                            |           |

Welds, if not otherwise noted:



t - thinner piece thickness

Execution class

EN 1090 EXC2

Flatpattern note

Bend angles is the open angle.


KFaktor value used = 0,44.

Inside radius in bends = Thickness.

Welding

Unless other indicated qualitylevel C,

according to SS-EN ISO 5817

Welds, if not otherwise noted:  
a0,8\*t (min) 

t - thinner piece thickness  
Exceution class  
EN 1090 EXC2

Flatpattern note  
Bend angles is the open angle.  
KFaktor value used = 0,44.  
Inside radius in bends = Thickness.

Welding  
Unless other indicated qualitylevel C,  
according to SS-EN ISO 5817

Po nupjovimo prie nupjautų vamzdynų galų  
pritvirtinamas kampainis kaip ir dabar yra  
padaryta

